



ACADEMY
FACE AND BODY



EVERYTHING
YOU NEED TO KNOW ABOUT
**DOUBLE CHIN
REMOVAL**

What Is **Double Chin Removal**?

Fullness under the chin is a common concern for many people. In fact a recent study showed that 67% of people report this as their trouble area despite diet and exercise.

Factors such as age and changes in weight can contribute to fullness in this area, however some people are also genetically predisposed.

DOUBLE CHIN REMOVAL

Academy Face and Body offers a revolutionary treatment to reduce or remove your double chin, without the need for surgery.

A synthesized form of deoxycholic acid (a substance found naturally in our bodies and is used to help break down fat in food) is injected, which breaks down the targeted fat cells under the skin resulting in a more contoured and refined neck and jawline.



No surgery



No scarring



Simple injection

Are you a candidate for **Double Chin Removal**?

WHO IS A GOOD CANDIDATE FOR DOUBLE CHIN REMOVAL?



Double Chin Removal is suitable for patients who:

- Are concerned with fullness under their chin
- Are seeking a non-surgical treatment option



WHO IS A NOT A GOOD CANDIDATE FOR DOUBLE CHIN REMOVAL?



Double Chin Removal is unsuitable for patients that:

- Have no submental fat
- Have a lot of loose/excess skin under the chin



The **procedure**

ACADEMY DOUBLE CHIN REMOVAL PROCEDURE

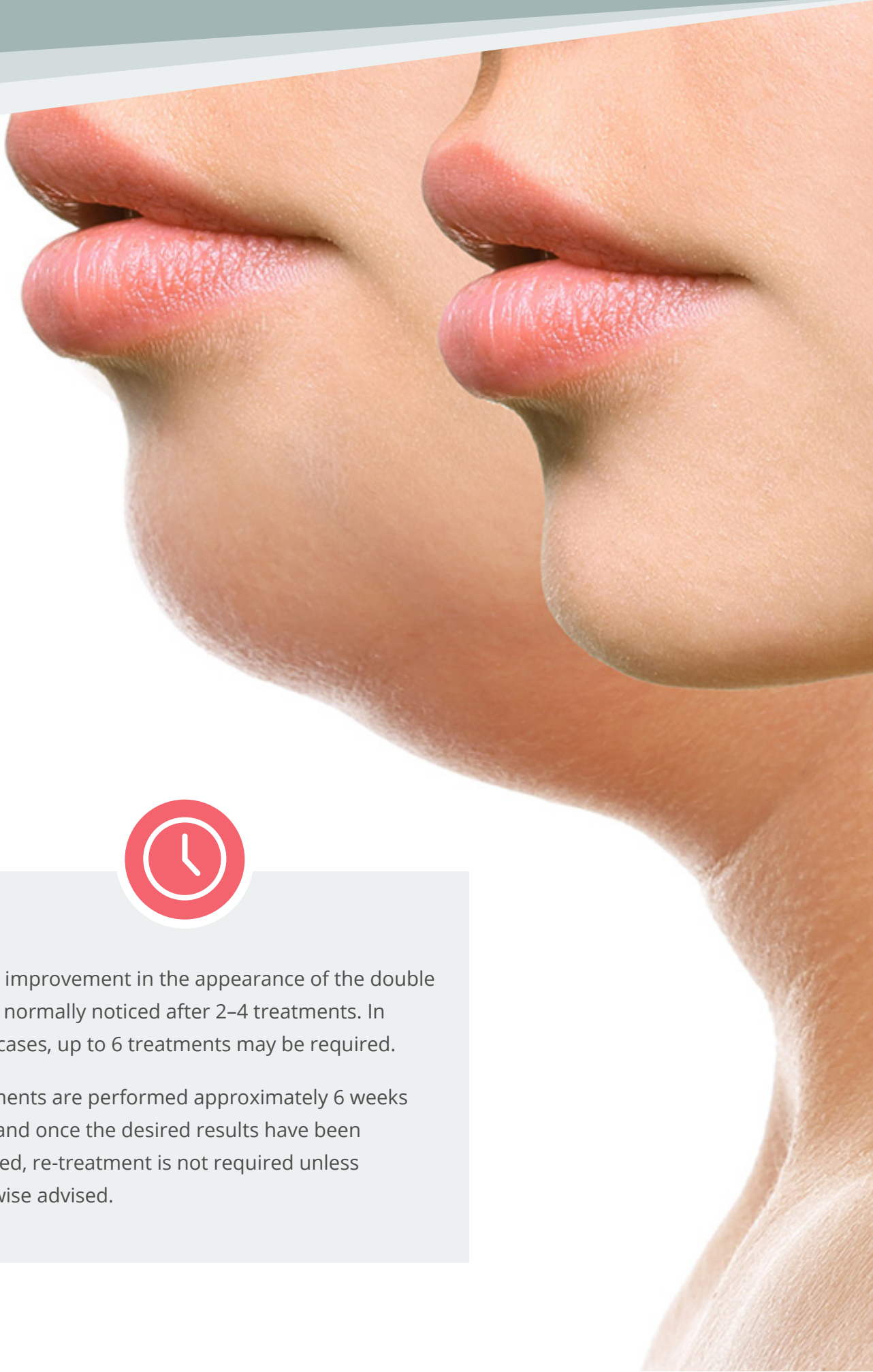
Your skilled clinician will discuss the treatment with you in detail and ensure your suitability before proceeding any further.

A fully customised treatment plan will be developed taking into account your anatomy, circumstances and concerns.

The treatment itself only takes 30–45 mins and is administered as a series of sessions.



How many treatments **will I need?**



Visible improvement in the appearance of the double chin is normally noticed after 2–4 treatments. In some cases, up to 6 treatments may be required.

Treatments are performed approximately 6 weeks apart and once the desired results have been achieved, re-treatment is not required unless otherwise advised.

Pre and Post-Treatment Care

PRE-TREATMENT

Prior to the treatment, a specifically designed ice pack will be applied to the area to ensure comfort.

POST-TREATMENT

After your treatment, you may return to normal activities, although the most common side effects can include:

- Bruising
- Numbness
- Redness
- Pain
- Swelling
- Tingling
- Tenderness

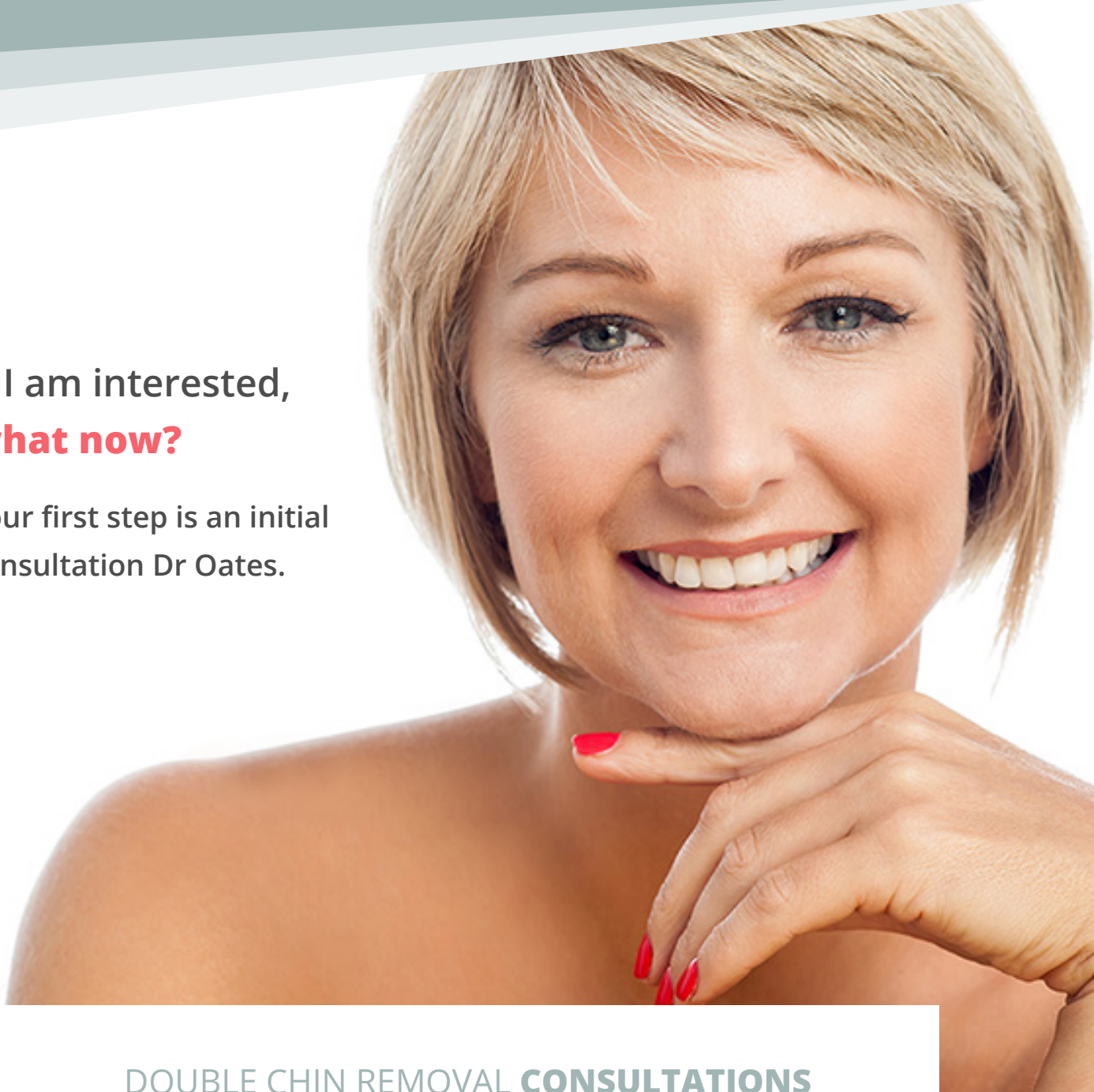
These side effects are normally short-lived and ice or cold packs can be applied after the treatment as required.



What are my **next steps?**

If I am interested,
what now?

Your first step is an initial
consultation Dr Oates.



DOUBLE CHIN REMOVAL **CONSULTATIONS**

During the consult with our experienced physicians you will feel as relaxed as a routine visit to your GP. During this consultation in our Perth office, our team can go over your cosmetic concerns, and develop a customised treatment plan to suit your personalised needs.

CALL US ON **(08) 9382 4800**



ACADEMY
FACE AND BODY

www.academyfaceandbody.com.au